

2018 Early Bird – Bargain

Cruise and Train

Celebrity Australia Cruise from Perth to Sydney

Indian Pacific Train from Sydney to Perth

22 days from \$4999 per person

Departs 28 Feb 2018

Inside cabin: \$4999 per person

Outside Cabin: \$5299 per person

Balcony Cabin \$5499 per person



Whats included

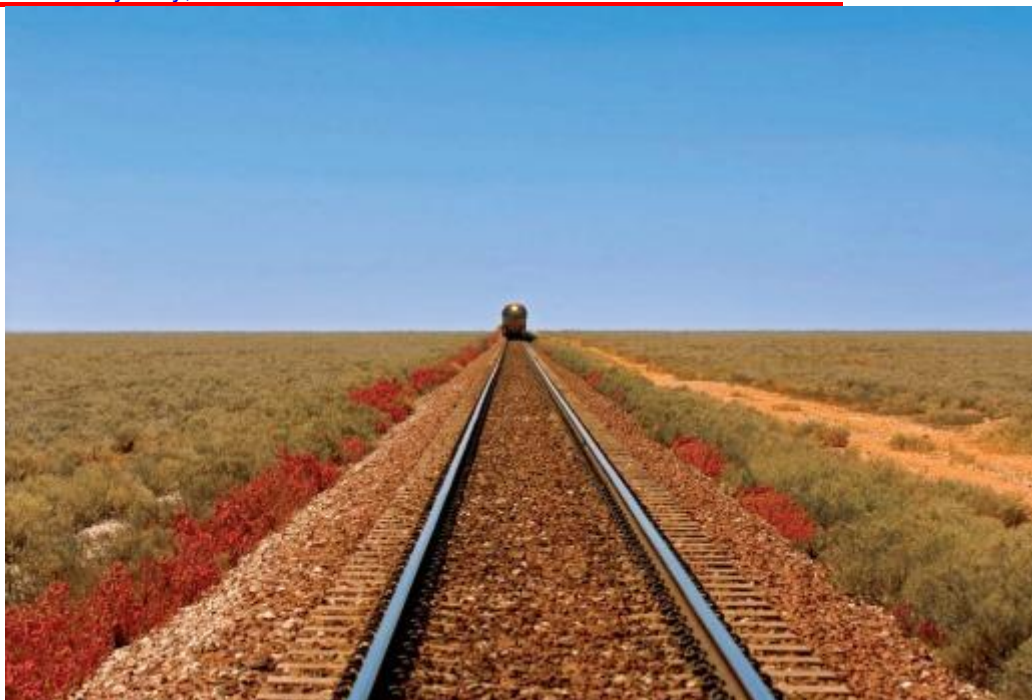
- 6 night Rail Journey aboard the Indian Pacific from Sydney to Perth
- 2nt pre cruise stay at the hotel in Perth on a room only basis
- 16 night cruise aboard the Celebrity Solstice on full board basis
- Superb choice of restaurants and bars • Meals and Entertainment on board • All port taxes

NOT INCLUDED: • Transfers • Gratuities

- Based on Sydney Valid until 19th October 2016, unless sold out .

ITINERARY

DAY	DATE	PORT	ARRIVE	DEPART
Mon	Mar 5	Perth (Fremantle), Australia		8:00pm
Tue	Mar 6	At Sea		
Wed	Mar 7	At Sea		
Thu	Mar 8	At Sea		
Fri	Mar 9	Adelaide, Australia	8:00am	5:00pm
Sat	Mar 10	At Sea		
Sun	Mar 11	Melbourne, Australia	7:00am	5:00pm
Mon	Mar 12	At Sea		
Tue	Mar 13	At Sea		
Wed	Mar 14	Milford Sound, New Zealand (Cruising)		
Wed	Mar 14	Doubtful Sound, New Zealand (Cruising)		
Wed	Mar 14	Dusky Sound, New Zealand (Cruising)		
Thu	Mar 15	Dunedin (Port Chalmers), New Zealand	9:00am	7:00pm
Fri	Mar 16	Akaroa, New Zealand	7:00am	6:00pm
Sat	Mar 17	Wellington, New Zealand	8:00am	5:00pm
Sun	Mar 18	Picton, New Zealand	8:00am	5:00pm
Mon	Mar 19	At Sea		
Tue	Mar 20	At Sea		
Wed	Mar 21	Sydney, Australia	6:30am	



Celebrity Solstice

Ship Rating: ★★★★★

The first ship to be a part of Celebrity's Solstice class, the Celebrity Solstice features many of the personal amenities passengers have come to expect from Celebrity while carrying 2,850 passengers. Each of the ships in the Solstice class feature wireless Internet throughout, larger staterooms with flat screen televisions, spacious bathrooms, more storage space and plush European bedding. Balconies are available in 85% of the ship's staterooms, and the Solstice-class ships include an exceptional range of guest-inspired services and amenities made possible due to the ships' larger size. Spa-enthusiasts aboard the Celebrity Solstice can enjoy the 130 "AquaClass" veranda staterooms, with unlimited access to the Aqua Spa relaxation room and the Persian Garden, and exotic aromatherapy and steam room. AquaClass guests also receive exclusive complimentary dining in Blu, an intimate 130-seat specialty restaurant.



[Celebrity Solstice Pictures](#)

Detailed Information



[Deck Plans](#)



[Special Needs](#)



[Dining](#)



[Wireless Internet](#)

Ship Statistics

Year Built	2008
Last Refurbished	2012
Tonnage	122,000 tons
Registry	Malta
Length	1,033 feet
Beam	121 feet
Passenger Capacity	2,850
Crew Size	1,250
Total Inside Cabins	102
Total Outside Cabins	1,323
Cabins & Suites w/ verandas	1,177
Suites	56
Maximum Occupancy per room	5
Age Restrictions	One person must be 21 or older
Dinner Seatings	2
Seating Assignments in Main Dining Room	Assigned
Dining Hours	6:00 p.m. & 8:30 p.m.
Dining Room Dress Code	Dining
Tipping Recommended?	Yes
Tipping Guidelines	Added to onboard account: \$13.50 per person, per day in standard staterooms, \$14.00 per person, per day for Concierge/Aqua class staterooms, \$17.00 per person, per day for Suites. 15% tip included on beverage

Services & Amenities

Bars/Lounges	14
Beauty Salon/Barber Shop	Yes
Casino	Yes
Chapel	No
Disco/Dancing	Yes
Elevators	Yes
Hot Tub	10
Cell Phone Service	Yes
Internet Center	Yes
Wireless Internet Access	Yes
Note: Available in certain areas	
Laundromats (self service)	No
Laundry/Dry Cleaning	Yes
Library	Yes
Movie Theatre	Yes
Outdoor Movie Screen	No
Onboard Weddings	Yes
Shops	Yes
Showroom	Yes
Spa	Yes
Video Arcade	Yes

Fitness & Sports Facilities

Basketball Court	Yes
Fitness Center	Yes
Golf Driving Net	No
Golf Simulator	No
Ice Skating Rink	No
Jogging Track	Yes
Mini-Golf Course	No
Rock Climbing Wall	No
Swimming Pool	3

	orders.	Tennis Court	No
<u>Onboard Currency</u>	<u>US Dollar</u>	Water Slide	No
		Water Sports Platform	No
		Cabin Features & Amenities	
		24-Hour Room Service	Yes
		Hair Dryer	Yes
		Safe	Yes
		Telephone	Yes
		Television	Yes
		Kids Facilities	
		Babysitting	Yes
		Children's Playroom	Yes
		Kiddie Pool	No
		Supervised Youth Program	Yes
		Teen Center	Yes
		Special Needs & Requests	
		Adjoining Cabins (private connecting doors)	Yes
		Kosher Meals	Yes
		Single Occupancy Cabins	No
		Single Share Program	No
		Wheelchair-Accessible Cabins	30